

# cojean

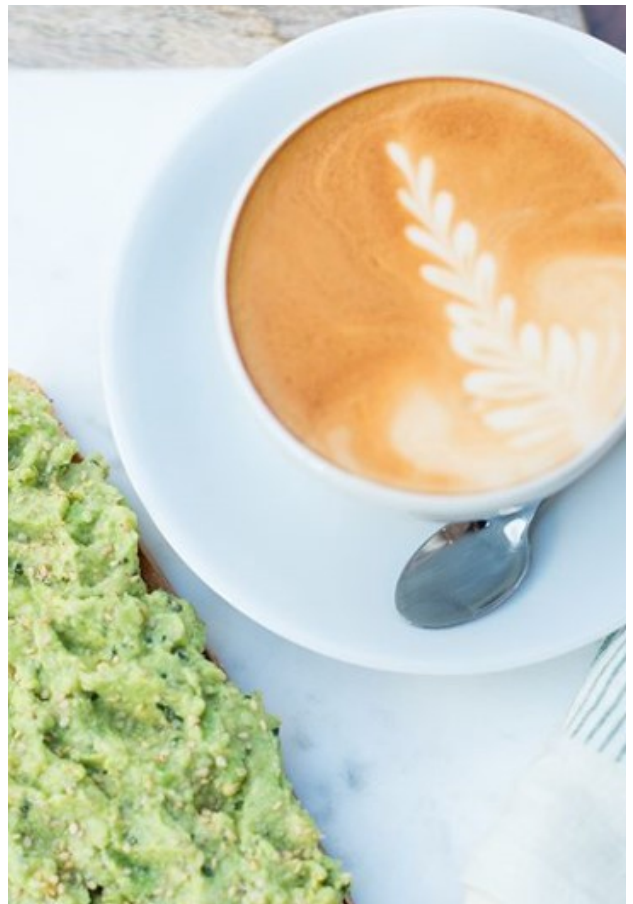
## PROPERTY REQUIREMENT

Cojean established in Paris in 2001 offering a fresh, healthy, colourful menu are seeking to expand their presence in London.

**SPACE** are seeking opportunities of a minimum 1,000 sq ft on ground floor in busy affluent locations.



**Target Locations:**  
Canary Wharf  
West End  
City



**Use: A1**

**Market Rents Paid**

**Timing: ASAP**



**Please forward all opportunities to:**

**Rob Palmer**

**0345 900 3902 / 07738 988801**

**rob.palmer@space-rpc.com**

**Peter Leverett**

**0345 900 3901 / 07860 967430**

**peter.leverett@space-rpc.com**

